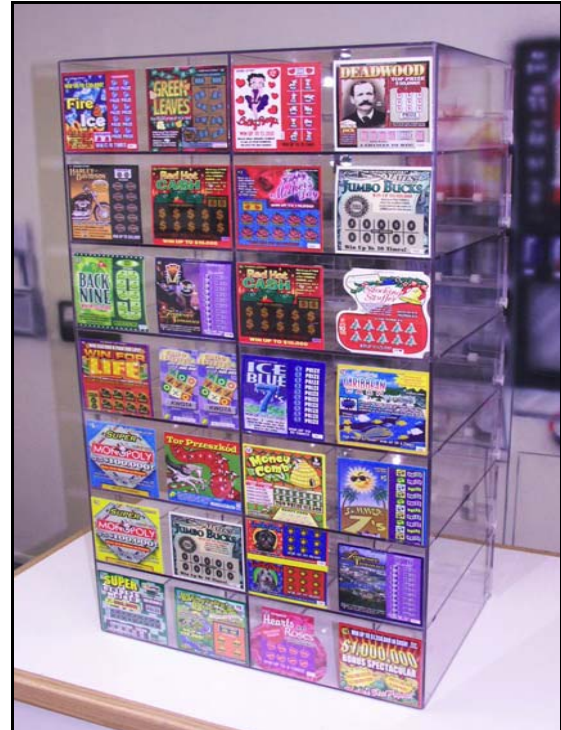


# OCSC On-Counter Lottery Dispensers

- Up close and profitable – Display tickets put the games in front of the customers
- Available in a variety of sizes and configurations
- Store personnel friendly – easy loading and dispensing



OCSC-24 with 6" bins on top



OCSC-28 all 4" display tickets



OCSC-15 with 6" bins



OCSC-10 with 6" and 8" bins  
OCSC-12 short version

TAKE-A-TICKET, Inc. 800.253.4295 fax: 541.967.8415 [info@tatinc.com](mailto:info@tatinc.com)

## OCSC continued



OCSC-4 game "Topper"

### #4 game "Topper" for OCSC dispensers

- Add more games to dispensers in already in use
- Available in any size bins
- Available in any configuration: #2, #6 #8, or more games

### OCSC MOUNTING INSTRUCTIONS:

1. These units are mounted on the counter using double stick tape.
2. Thoroughly clean counter with alcohol or soap and water. Rinse well.
3. **MAKE SURE OF DISPENSER PLACEMENT PRIOR TO REMOVING COVERING ON TAPE!** Once placed, unit can not be moved.

### OCSC loading and dispensing:

1. Place a display ticket or last live ticket from pack in the display slot facing the customers.
2. Lay ticket pack in unit and feed first ticket through the ticket tightener on the door.
3. When dispensing, pull the tickets straight through the ticket tightener and tear up at the perforation.

### Care and feeding of your lottery dispenser:

#### You Will Need:

1. Clean Lint Free soft cloths, 100% cotton diapers, or other very soft cotton cloths.
2. Use Brilliance or similar cleaner/polish designed for plastic.
3. Use mild detergent if a plastic cleaner is not available.

#### To Clean:

1. Working in small sections; spray small amount of cleaning solution onto plastic.
2. Wipe gently with clean lint free cloth until cleaner is totally absorbed.

#### NEVER:

1. **Never** use *Windex* or ammonia or alcohol based cleaners. These will damage the plastic.
2. **Never** attempt to wipe plastic without using a cleaning solution.
3. **Never** use dirty cloths of any kind. This will scratch your plastic.